

Report on ATF2 Proposal (Vol.2)

T. Sanuki
ICEPP, U-Tokyo

Latest Draft

<http://lcdev.kek.jp/ILC-AsiaWG/WG4notes/atf2/proposal/executive/>

username: atf2

password: executive

Contents

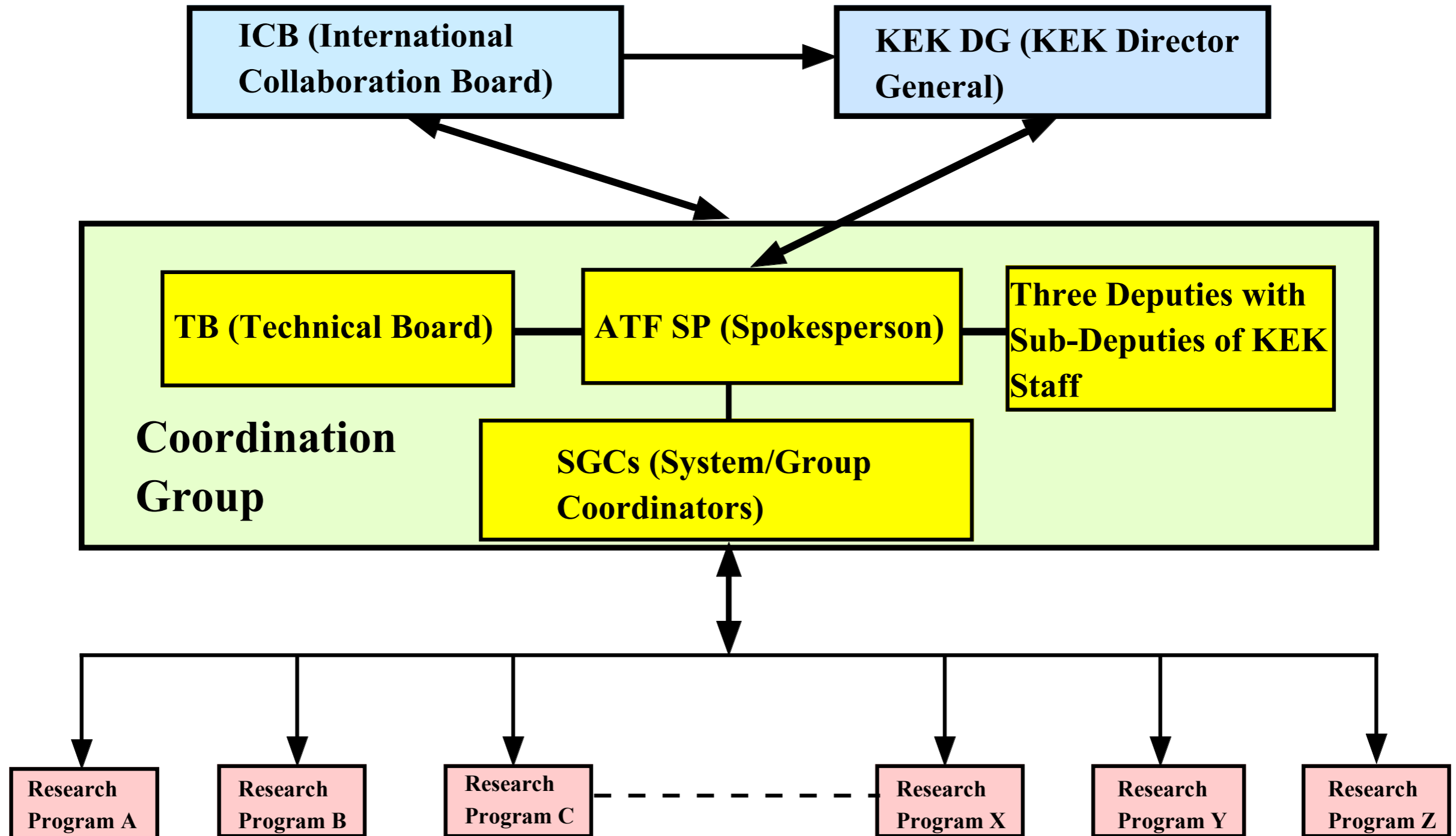
1. Introduction (EB)
2. Timeline (Yokoya)
3. Organization (Urakawa)
4. Cost Estimation (Tauchi)
5. International Contribution (Tauchi)
6. Conclusion / Summary (EB)

Key Figures/Tables

Organization

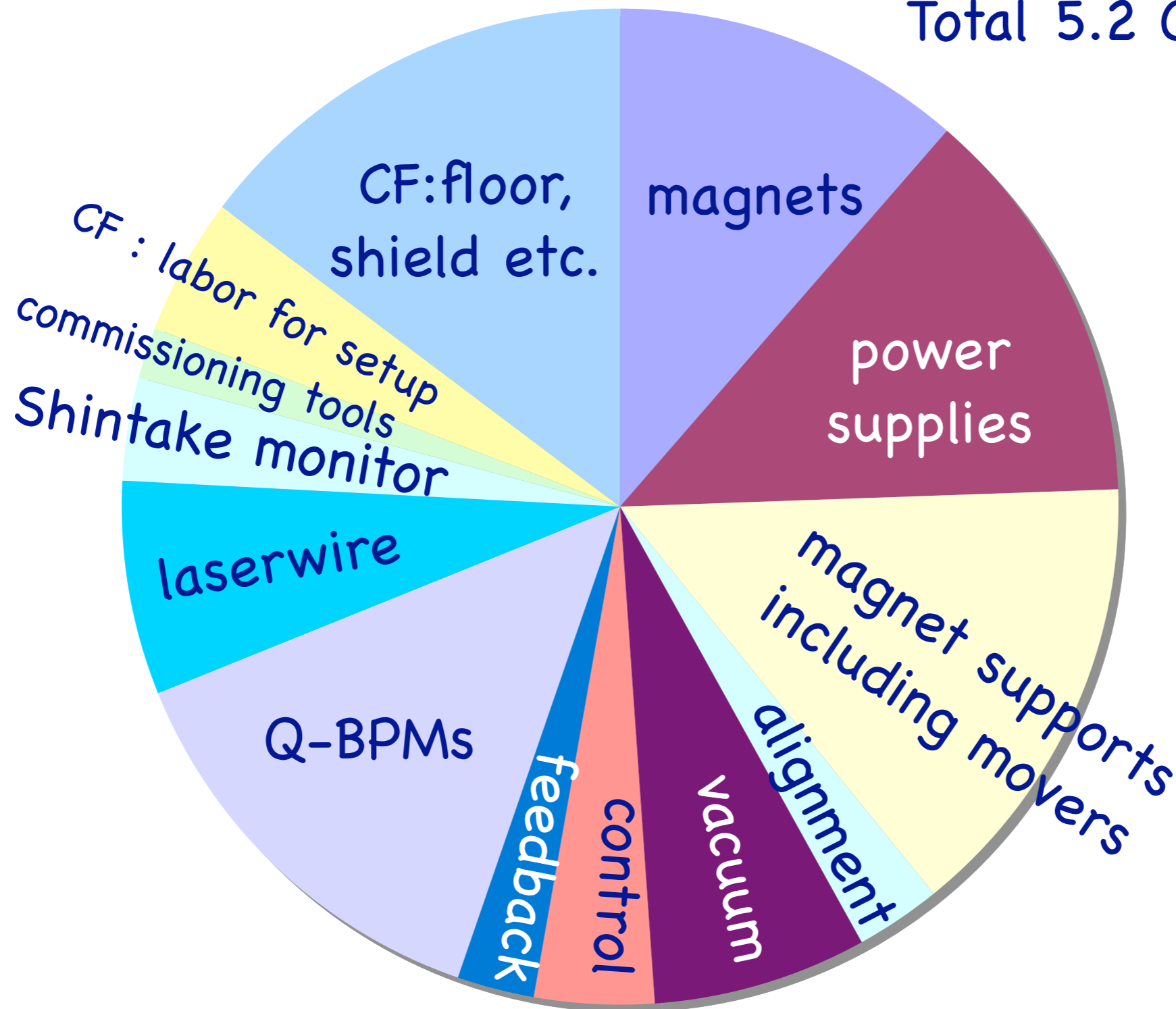
OK?

ATF2
Deputy : A.Seryi
Co-deputy: T.Tauchi

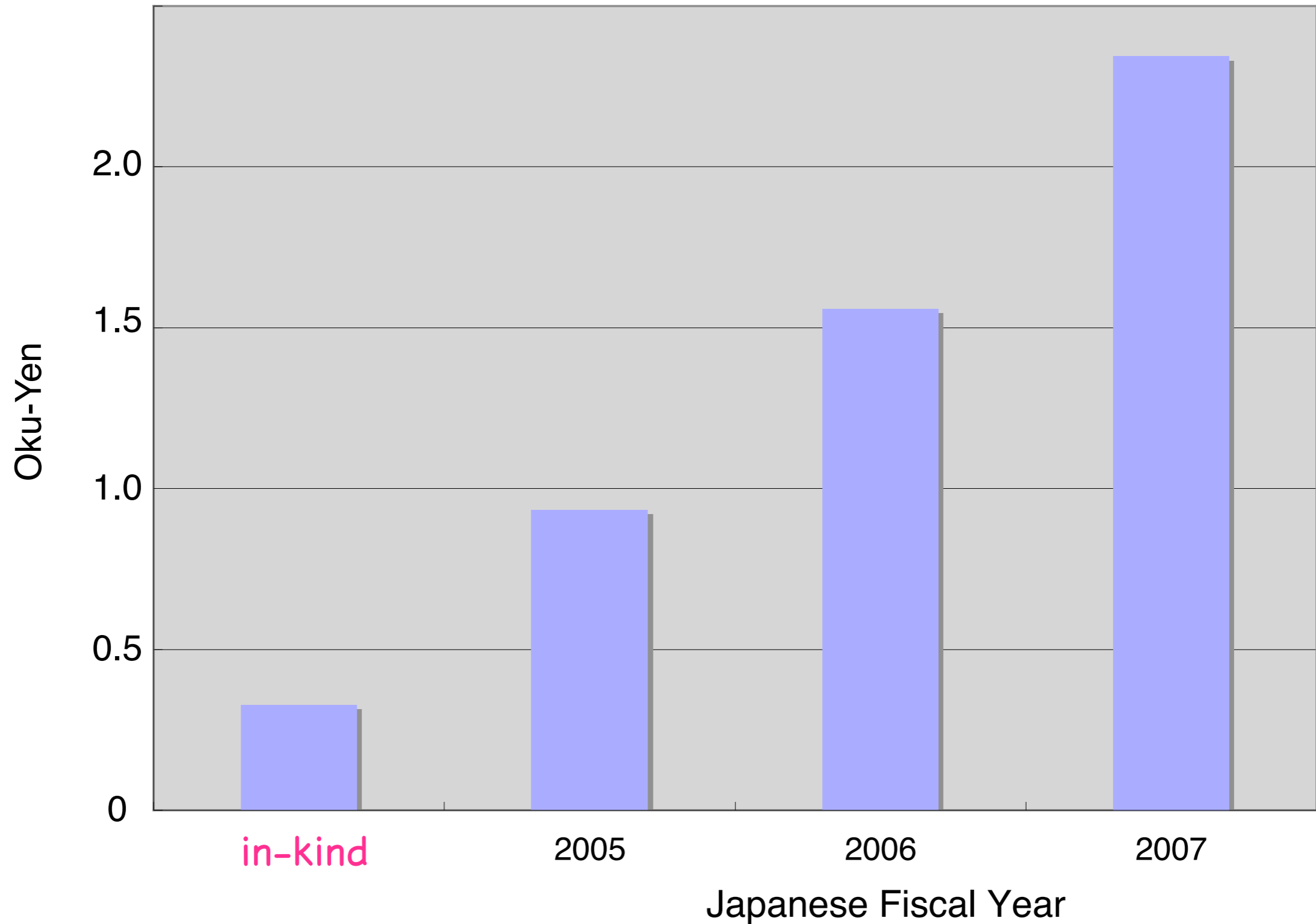


Breakdown

Total 5.2 Oku-yen



Time profile



Int'l Contribution (I)

Item	France;LAL,LAPP	DESY	CERN	UK	SLAC	China (IHEP)	Korea (PAL)	KEK
Mechanical Stability and Vibrations (include GM) of Qs	EUROTeV	EUROTeV	An active stabilization table (2.4x0.8x0.8(H)m 100kCHF (8.72Myen)	yes				yes
Geant-4 modeling of the ATF-2 beam line by BDSIM	EUROTeV; 1.5 person-year at post-doc level during 2006-2008, and travel money			yes				
Evaluation and implementation of steering and optical tuning algorithms, BBA and IP tuning	1 PhD student in 2006-2009 + money for visits to KEK		7 man-months	yes + EUROTeV (ILPS)		0.5man-years	3 man-months	yes
participation in commissioning activities with development of the strategy	yes		4 man-months	yes		0.5man-years		yes
design of the low-noise electronic readout system, and coherent radiation monitor for beam size measurement	technical contributions + money for visits to KEK							yes
Fast Kicker Pulser		XFEL						yes/ATF
Laser Wire System		EUROTeV (LBBD)		EUROTeV (LBBD) 35Myen			yes	
Remote Operations		EUROTeV						

Int'l Contribution (2)

Item	France;LAL,LAPP	DESY	CERN	UK	SLAC	China (IHEP)	Korea (PAL)	KEK
Survey of relevant collective effects in ATF-2 and ATF extraction line			1 man-month (wake field)					
Beam feedback/feedforwrđ system				FONT4, 10Myen	4Myen		yes (RF)	
Three high-precision transformer BPMs; 100nm, 4mm aperture; verification?			EUROTeV 160kCHF (13.95Myen)					
QBPM(37) electronics system					218k\$ (24Myen)			
QBPM(37) : cavity system							6 man- months, 41.5Myen	
QBPM(37) : hybrid+short cables								5Myen
Q-magnets						23.5Myen 2 man- years		
Magnet movers: 24 / 33+1					24Myen			44MYen
magnet support system (except for FD)								
Power supply system					67.5Myen		if possible, 6 man- months	
vacuum system								38.4Myen
control system								10Myen
Shintake monitor (BSM)					3Myen			14.5Myen

Subjects to be confirmed

- May I make the Vol.2 public ?
- Preprint numbers ?

Same as Vol.1 or KEK only to save time ??

My personal question

- Definition of ATF2 (What is ATF2 ?)
 - a. Extended extraction line **only**
 - b. ATF **with** extended extraction line
 - c. ATF **for ILC (SCLC)**, which includes extended extraction line